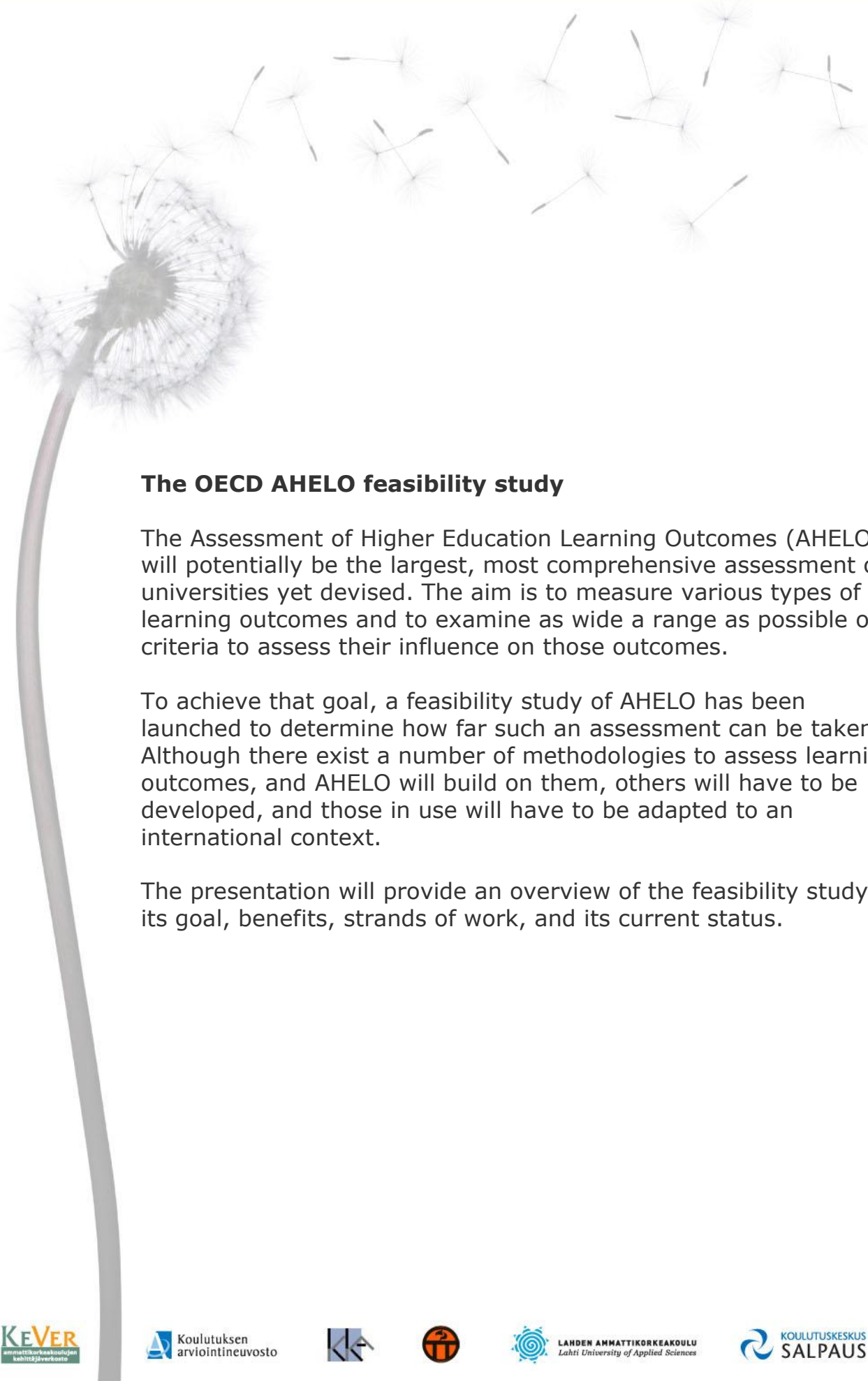


# *Tutkimuspäivät* *Lahdessa 14.–15.10.2009*



## **The OECD AHELO feasibility study**

The Assessment of Higher Education Learning Outcomes (AHELO) will potentially be the largest, most comprehensive assessment of universities yet devised. The aim is to measure various types of learning outcomes and to examine as wide a range as possible of criteria to assess their influence on those outcomes.

To achieve that goal, a feasibility study of AHELO has been launched to determine how far such an assessment can be taken. Although there exist a number of methodologies to assess learning outcomes, and AHELO will build on them, others will have to be developed, and those in use will have to be adapted to an international context.

The presentation will provide an overview of the feasibility study, its goal, benefits, strands of work, and its current status.